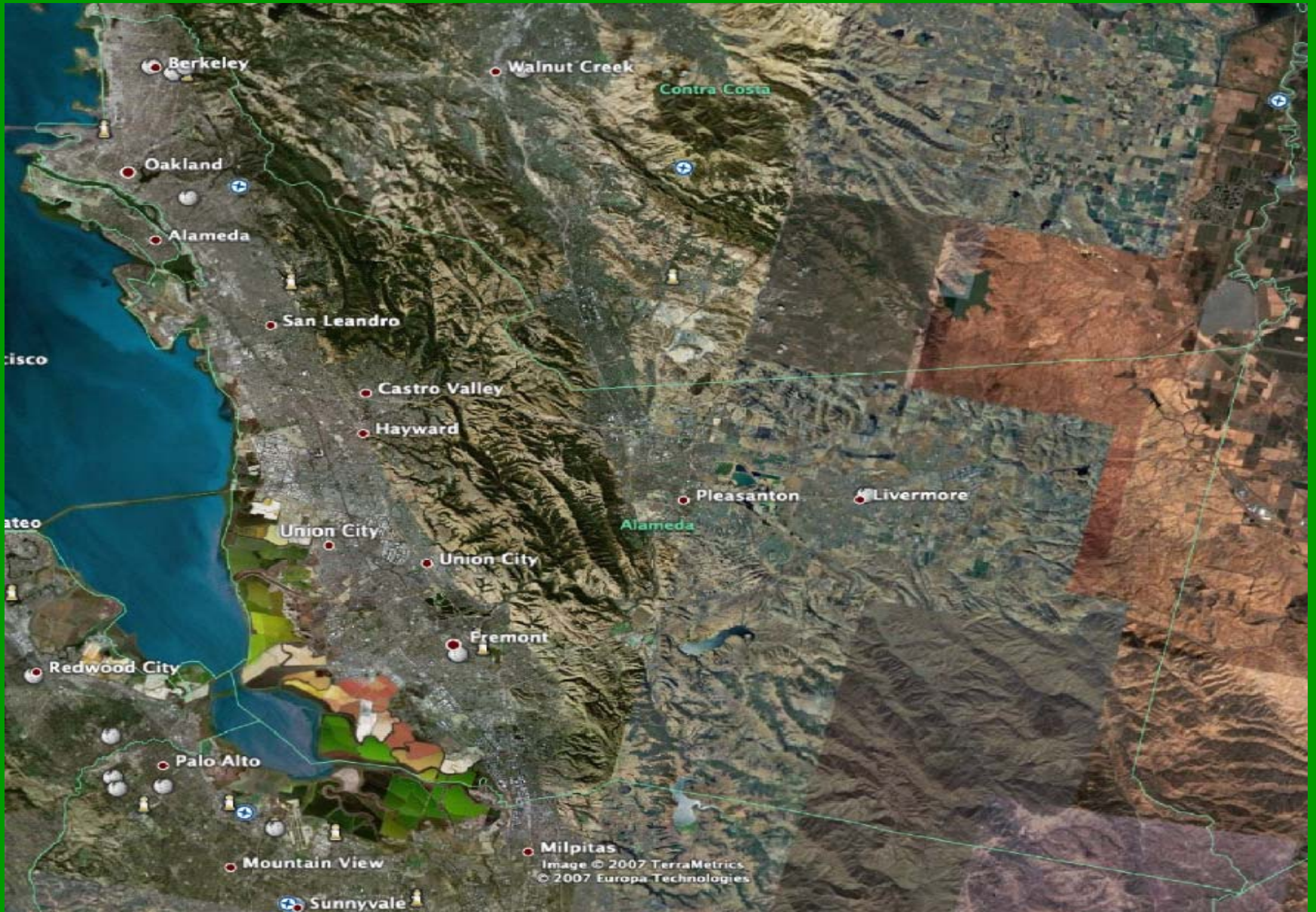




Material Recovery Industries
Serving Your Waste Recovery Needs

Composting Facility Development

ACWMA Property



January 24, 2007

Material Recovery Industries

Forget...

Everything you remember.

North Flynn Road

- Habitat mitigation

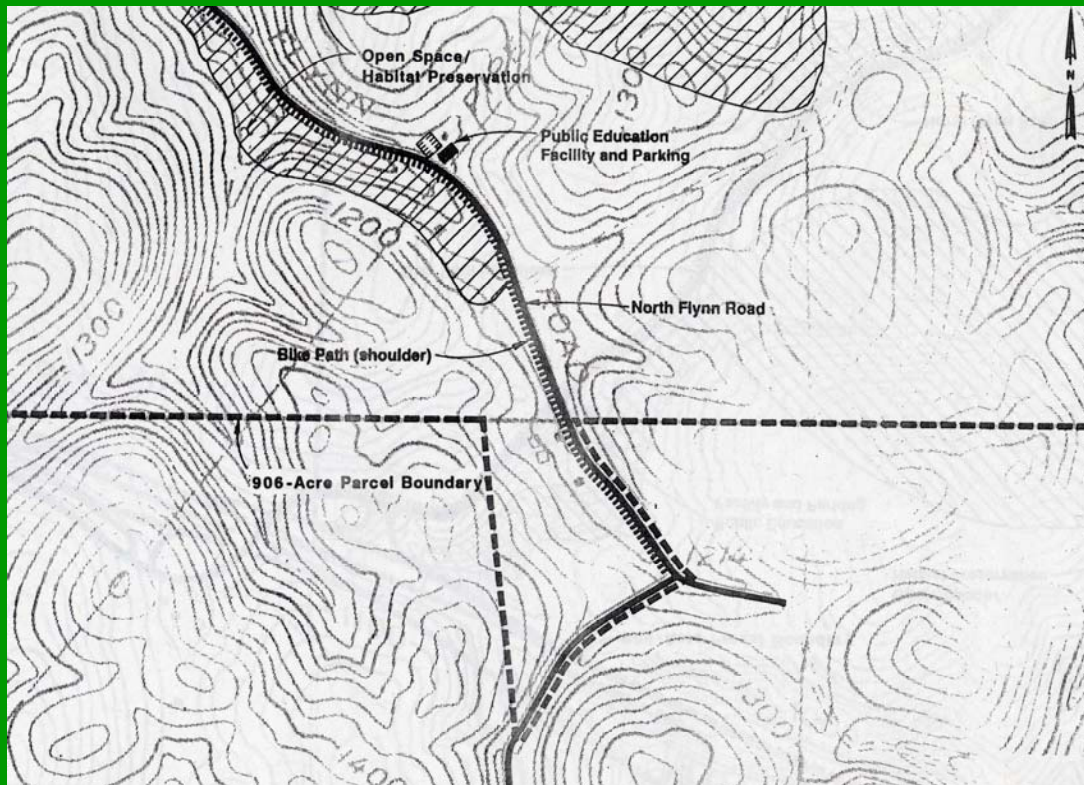


January 24, 2007

Material Recovery Industries

North Flynn Road

- Improvements

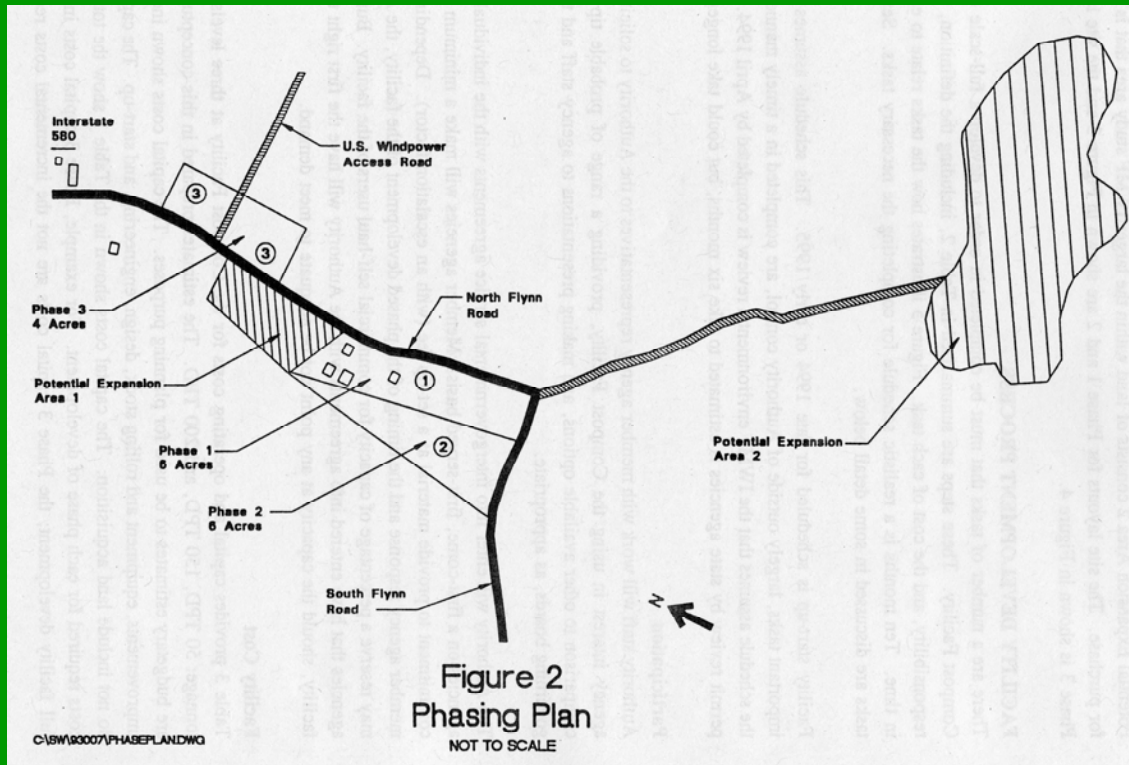


January 24, 2007

Material Recovery Industries

Siting

- Split Operation



Site Location

- Proximity to neighbors



January 24, 2007

Material Recovery Industries

Site Location

- Proximity to neighbors



January 24, 2007

Material Recovery Industries

There is a better location



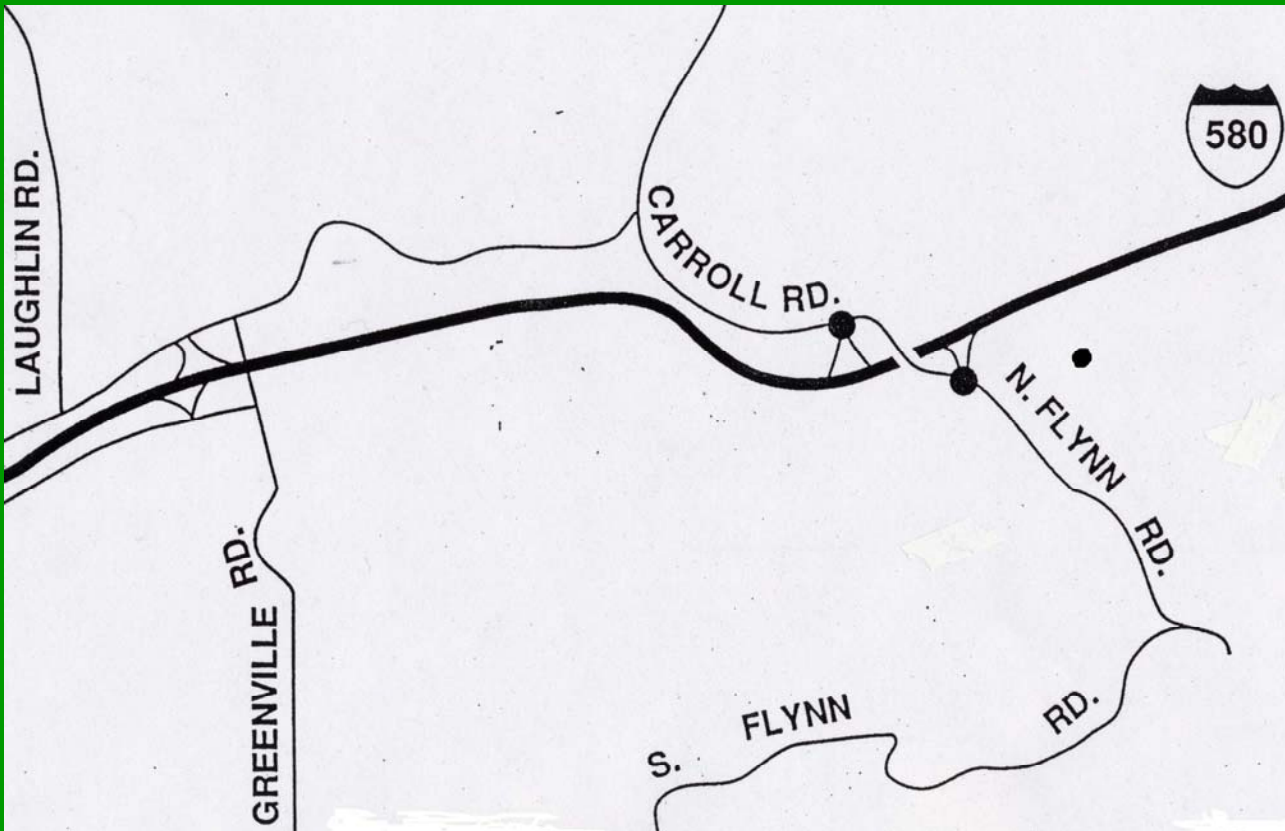
- North Flynn Road
- Consolidated
- Neighbors
- ACWMA Guidelines and Policies.

What is the proposed capacity
(tons per day) of the site to be
permitted?

1,000 tons per day.

What is the access to the site?

- North Flynn Road



What is source of water at the site?

- Zone 7, Livermore
- On-site wells
- Contact Water



January 24, 2007

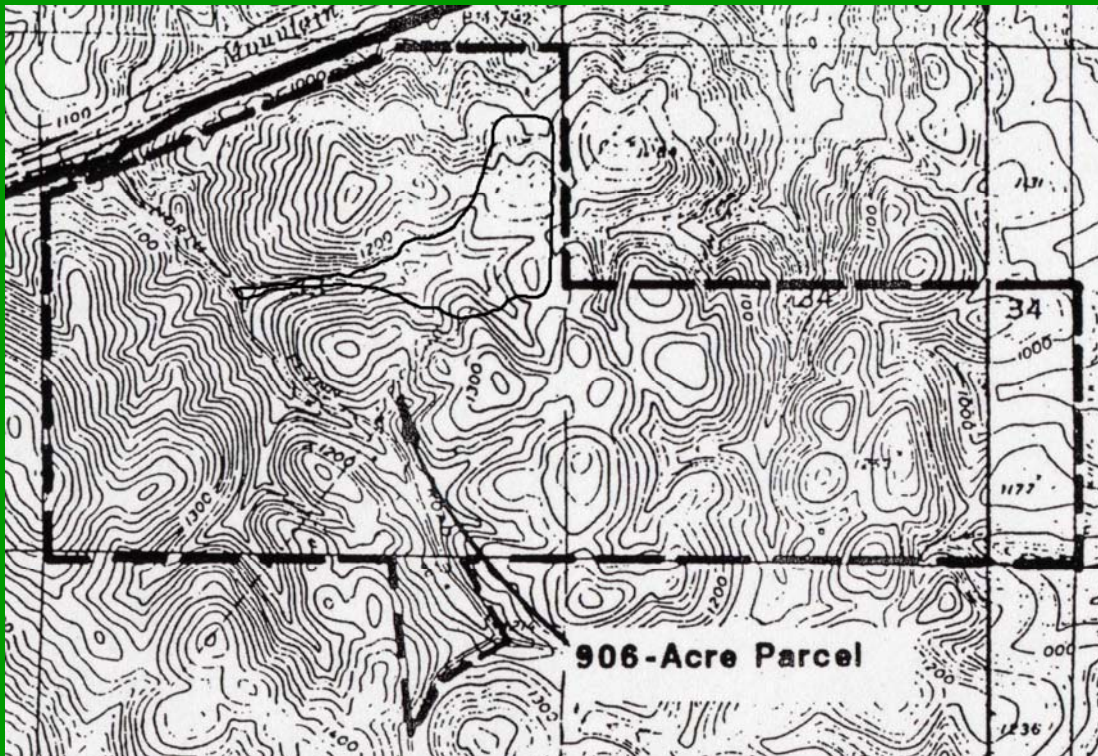
Material Recovery Industries



January 24, 2007

Material Recovery Industries

What is the size of the parcel?



- 905 acres
- ~40 acres needed for operations.

What is current use at the site?



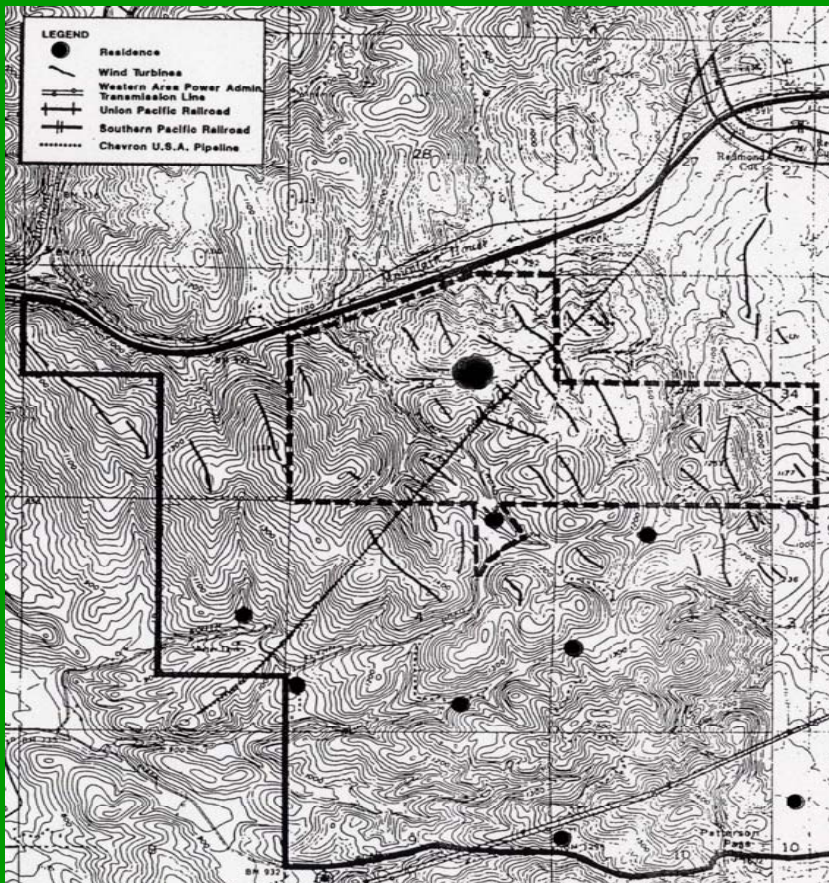
- Wind Power
- Grazing.



What is applicable zoning and general plan designation of the site?

- Zoning: A-B-E (Agriculture)
- General Plan/ECAP: Large Parcel Agriculture.

What is proximity to neighbors and what type of neighbors (businesses/residential)?



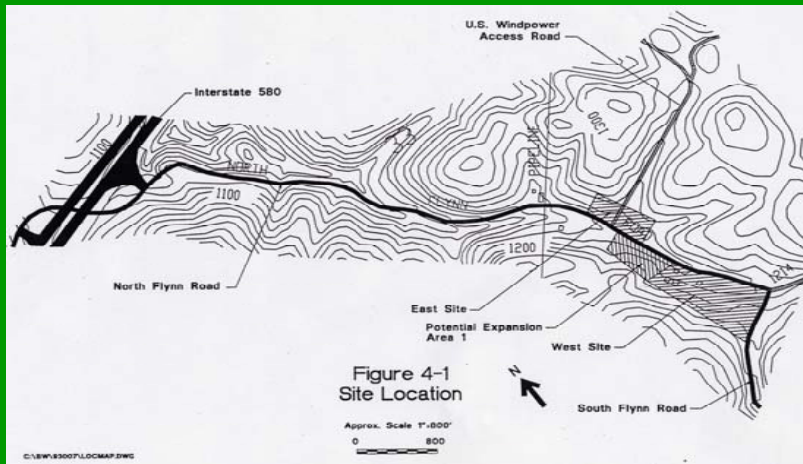
- Residences
- Businesses

Who owns the site and how will the site be controlled by the operator?

Alameda County Waste Management Authority

MRI would operate the facility through an agreement with the owner.

What is the availability of infrastructure at the site?



- Access
- Utilities
- Topography
- Geology.



What is the cost of developing that infrastructure if it is not available?

PROJECTED INFRASTRUCTURE COST

Earthwork	\$1.5 to \$1.7 M
Pavement	\$2.1 to \$2.25 M
Aeration Pad/System	\$1.8 to \$1.95 M
Water Supply Systems	\$0.70 to \$0.85 M
Buildings	
Receiving (includes Admin. & Employee areas)	\$1.1 to \$1.3 M
Education	\$0.035 to \$0.04 M
Maintenance	\$0.70 to \$0.78 M
Photovoltaic System (110 kw)	\$0.90 to 0.98 M
TOTAL	\$8.8 M to \$9.8 M

- 1,000 TPD vs. 600 TPD
- Covered Areas
- Property
- Solar Energy.

What type of composting operation is proposed?

Aerated Static Pile

What products would be produced from this project?

- Consistent with existing agreement
- Consistent with ACWMA Guidelines.

How would those products be marketed and to whom?

- Marketing plan
- Current Authority Agreement

What is the anticipated time table for the development of your project?

- Current Environmental Review/Permitting
- Permitting 9-12 months
- Construction 7 months
- Operational Fall 2008.

What are the capital requirements of the proposed project and how would you propose they be structured?

- Site improvements (\$8.8 to \$9.8M) funded by Authority
- Processing/Rolling equipment (\$17 to \$21M) funded by MRI.

In developing a public/private partnership using your site, what does the proposer need from the public partner and what benefits will they provide to the public partner?

- Need:
 - Property and Improvements.

Benefits?

- Diversion (10 to 15%).
- Long term processing capacity
- A known partner:
 - Agreements negotiated and signed
 - Proven technical, operational, and marketing expertise
 - Processing Technology
 - Pricing Structure
- Leverage Authority's assets.

Does your project increase or decrease greenhouse gas emissions?

Basis:

- ADC and Disposal
- Landfills produce methane (USEPA/BAAQMD).
- Methane is 20 times more potent (USEPA, 2005)
- Landfill gas systems are 60% efficient (USEPA LNG Model).
- ASP composting emits 99% carbon dioxide.
- Authority's property, point of generation and disposal.

Greenhouse Gases (cont.)

Lets assume that

1 ton of green waste

is composted

instead of being

disposed.

Greenhouse Gases (cont.)

Greenhouse Gas Potential for
composted green waste:

1 unit

Greenhouse Gases (cont.)

Greenhouse Gas Potential for
disposed green waste:

20 units

Greenhouse Gases (cont.)

USEPA standardized these collection systems as 60% efficient.

Greenhouse Gases (cont.)

Reduced Greenhouse Gas Potential
for disposed green waste:

8 units

Greenhouse Gases (cont.)

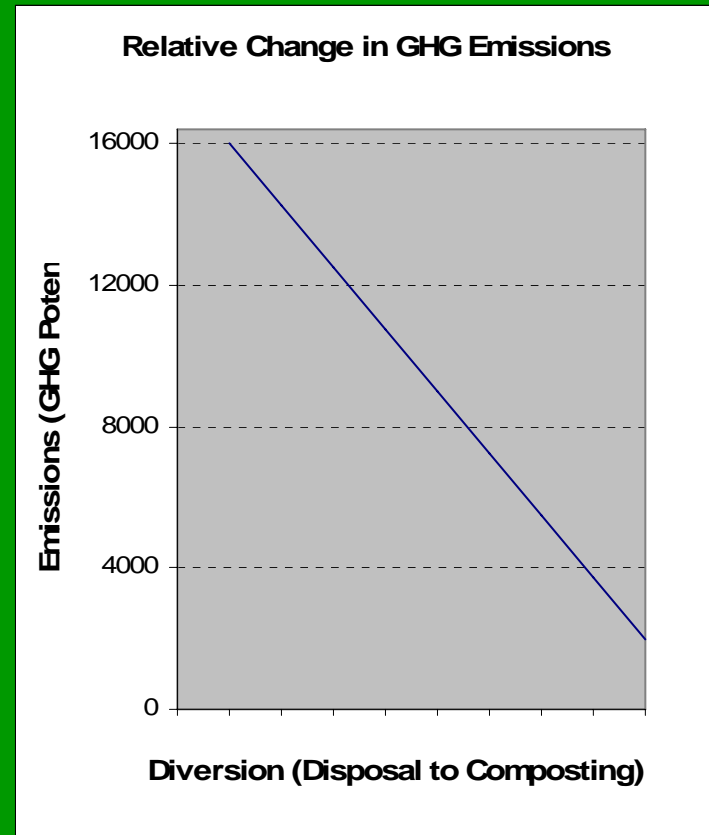
Composting = 1 unit

Disposal = 8 units

By composting you
reduce greenhouse
gas emissions by 8
fold or

800%

decrease



Does your project increase or decrease
greenhouse gas emissions?

The project will greatly decrease the
greenhouse gas emissions.

Greenhouse Gases (cont.)

Equipment Type	Annual Emissions (ton/yr)			
	VOC	NOx	PM10	CO
Grinder	0.0	0.0	0.0	0.0
Deck Screen	0.2	4.0	0.2	2.6
Trommel screen	0.3	6.1	0.2	1.3
Wheel Loader	0.7	14.8	0.4	3.2
Windrow Turner	0.2	5.1	0.1	1.1
Subtotal	1.4	30.1	1.0	8.3
On-Site				
	Annual Emissions (ton/yr)			
Mobile Vehicles	VOC	NOx	PM10	CO
Service Vehicle	0.0	0.0	0.0	0.0
Roll Off Bin Truck	0.0	0.0	0.0	0.0
Walking Floor Trailer/Truck	0.1	0.3	0.1	0.3
Water Truck	0.0	0.1	0.0	0.1
Subtotal	0.1	0.4	0.1	0.4
TOTAL	1.5	30.5	1.1	8.7

- Electric Equipment
- Equipment pollution technology.

Conclusion

- An operator committed to meeting all The Authority's Guidelines, including:
 - Equity for all member agencies
 - Price containment and stability
 - Quality assurance
 - NO continuing disposal of organic material.