

Composting & Recycling is Now the Law for California Multifamily properties and their residents:

Properly sorting your food scraps and other compostable materials not only helps fight climate change, it's now the law. Effective January 1st 2022, State law (SB 1383) requires residents and businesses to keep compostable and recyclable materials out of California's landfills. When compostable materials like food scraps, plant trimmings, and paper break down in a landfill they produce methane, a potent greenhouse gas that contributes to climate change. By composting and recycling these materials, you're helping to reduce methane emissions and create a healthier planet.

Property managers/owners must educate tenants, employees, and contractors about the rules at least annually and check bins periodically to ensure proper sorting.

Tenants must be informed of the rules no later than 14 days after move-in and at least 14 days before move-out.

For additional information visit: www.StopWaste.org/Rules

STOPWASTE

What do you want to get rid of?

Visit StopWaste.Org for local reuse, recycling, and disposal options.

Reuse and Bulky Items



Donate to local stores if they are in good condition.

OR

Ask your property manager/owner about PGS's Bulky Item Pickup Service.

Hazardous Materials and E-Waste

Free drop off of qualifying items at:

ALAMEDA COUNTY HOUSEHOLD HAZARDOUS WASTE FACILITIES

Livermore • Hayward • Oakland • Fremont

Visit StopWaste.org/HHW or call (800) 606-6606 for more details and hours of operation.



Fluorescent Bulbs and Batteries



Electronics



Household Cleaners and Chemicals



Medications



Sharps Containers



Small Appliances

Check StopWaste.org/HHW for disposal instructions.

Visit www.StopWaste.org for helpful tips on these topics:

- Reuse & recycling – especially helpful for difficult to recycle items
- Purchasing environmentally preferable products
- Resource-efficient landscaping
- Green/environmentally responsible building practices
- Reusable transport packaging (www.useresposables.com)

Visit www.StopWaste.Org, or call the Alameda County Recycling Hotline at (877) STOPWASTE (786-7927).



Scan to download this free sorting app or visit resource.stopwaste.org



(925) 846-2042

www.pleasantongarbage.com

© Pleasanton Garbage Service, May 2022. Printed on recycled paper.

How-To-Guide

APARTMENTS & CONDOMINIUMS



Pleasanton Garbage Service, Inc.

Recycling



Rinse or wipe recyclables.



Collect recyclables in a paper bag or reusable tote bag. Plastic bags are not allowed.



Empty recyclables into the containers labeled "Recycling".

Food/Green Waste

1



Separate unwanted food and food soiled paper.

2



Collect food scraps in a kitchen pail, paper bag, or wrap food scraps in a paper towel. Plastic bags are not allowed.

3



Empty food scraps into the containers labeled "Food/Green Waste".

RECYCLING



Clean Dry Paper



Empty Plastic Bottles and Containers

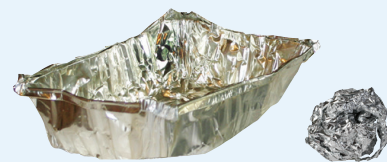


Flatten Boxes

Clean Dry Cardboard



Empty Glass Bottles and Jars

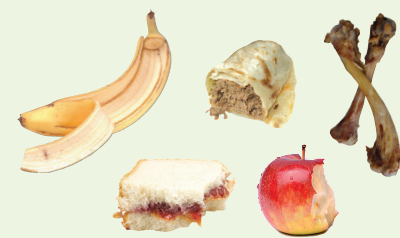


Aluminum Foil and Pans



Empty Aerosol and Metal Cans

FOOD/GREEN WASTE



Food Scraps

Meat, bones, dairy, grains, produce



Food Soiled Paper

Uncoated paper plates & cups, pizza boxes, tea bags, coffee filters & grounds. No plastic-lined paper products.



Plant Debris, Flowers and Untreated Wood

Leaves, grass clippings, branches under 6" in diameter & untreated wood



Paper Napkins and Paper Towels

All material placed in the food/green waste container is made into compost used to nourish local farmlands. Please only put food scraps, food soiled paper, and plant debris in the food/green waste container.

GARBAGE



Plastic Bags and Wraps

Retail shipping bags



Polystyrene Foam

To-go containers



Drink Cartons and Beverage Boxes

Plastic-lined paper products



Plastic Utensils, Lids, Cups and Straws



Diapers and Pet Waste

Pet waste litter must be in bag



Miscellaneous Household Waste

NOT ALLOWED:



Plastic Bags & Utensils



Dishware & Drinking Glasses



Food-Soiled Recyclables



Clothing and Textiles

NOT ALLOWED:



Plastic



Glass



Metal

NOT ALLOWED:



Recyclables



Hazardous Materials and E-Waste



Food/ Green Waste