



DATE: March 12, 2026

TO: Programs and Administration Committee
Planning Committee/Recycling Board

FROM: Cassie Bartholomew, Senior Program Manager
Hugo Grégoire, Management Analyst

SUBJECT: Mapping Alameda County's Food Recovery System

SUMMARY

One of StopWaste's main goals is to help build a healthy, equitable food system that minimizes waste. A key part of that work is food waste prevention and improving edible food recovery, including convening the Alameda County Food Recovery Network (ACFRN), a countywide collaborative of food recovery organizations, faith-based groups, and community partners working to strengthen food recovery efforts and implement SB 1383 edible food recovery requirements.

To support that work, StopWaste recently developed the **Alameda County Food Recovery System Map**, an internal tool that provides a comprehensive overview of commercial food generators, food recipient organizations, and food system organizations working across the county to ensure that edible surplus food is redirected to food insecure communities. At the February 12 board meetings, staff will present an overview of the tool and how it benefits food recovery work.

DISCUSSION

StopWaste partnered with Food Works Group to develop a pilot map of the Alameda County food system and food recovery activities. This map serves as a practical coordination tool for the network and for the broader ecosystem of food system organizations, including urban farms and food recipient organizations.

Through stakeholder interviews and follow-up surveys, the project engaged more than 30 food system stakeholders across 21 organizations. This collaborative effort produced tools to enhance understanding of the local food recovery system, identify service gaps, and support more strategic coordination among partners. Overall, the project strengthens the county's food recovery infrastructure by mapping the organizations that comprise Alameda County's food recovery system, while also supporting compliance with California's SB 1383 edible food recovery requirements.

Users can filter data by organization type, location, and operational characteristics to identify potential collaborators or service providers throughout the county. A companion user guide and video tutorial were developed to support use of the map and provide definitions for organization types displayed.

898

160

90

Food Donors

Food Recipient Organizations

Food System Partners

Alameda County Food Recovery Map

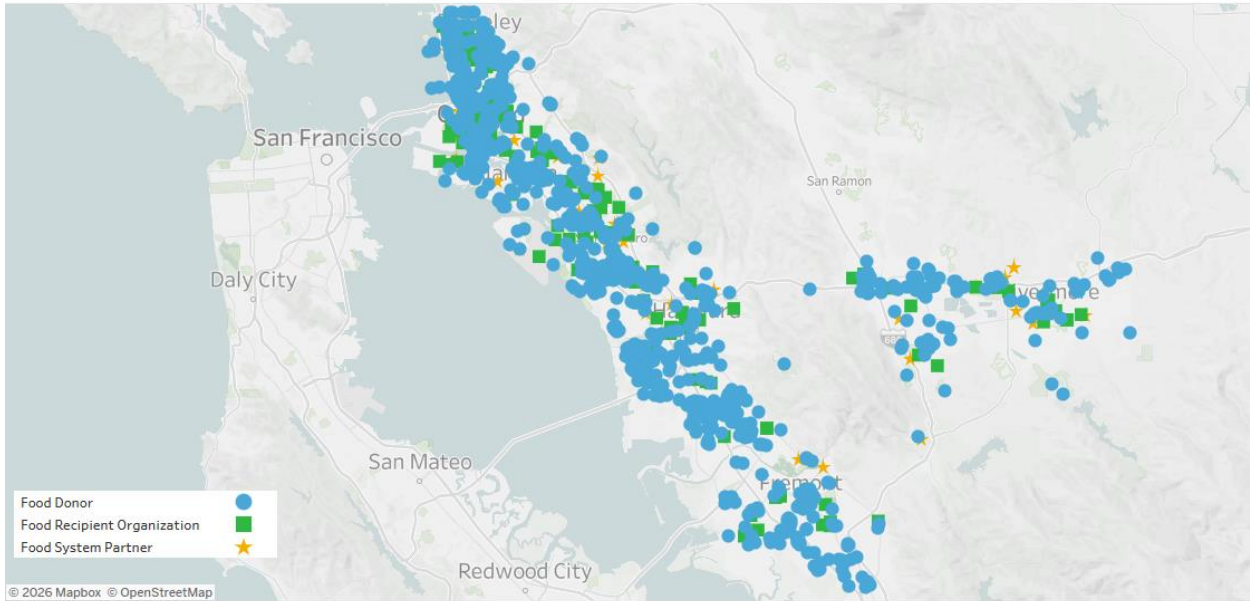


Figure 1. Alameda County Food Recovery System Map showing food donors alongside food recipient organizations and food system partners.

RECOMMENDATION

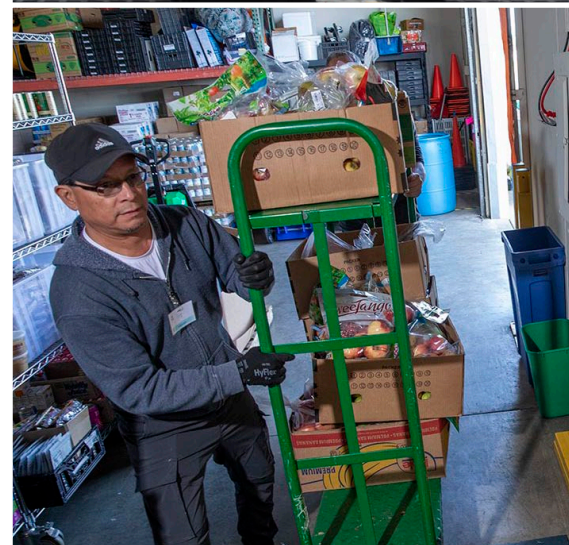
This item is for information only

STOP WASTE

Mapping Alameda County's Food Recovery System

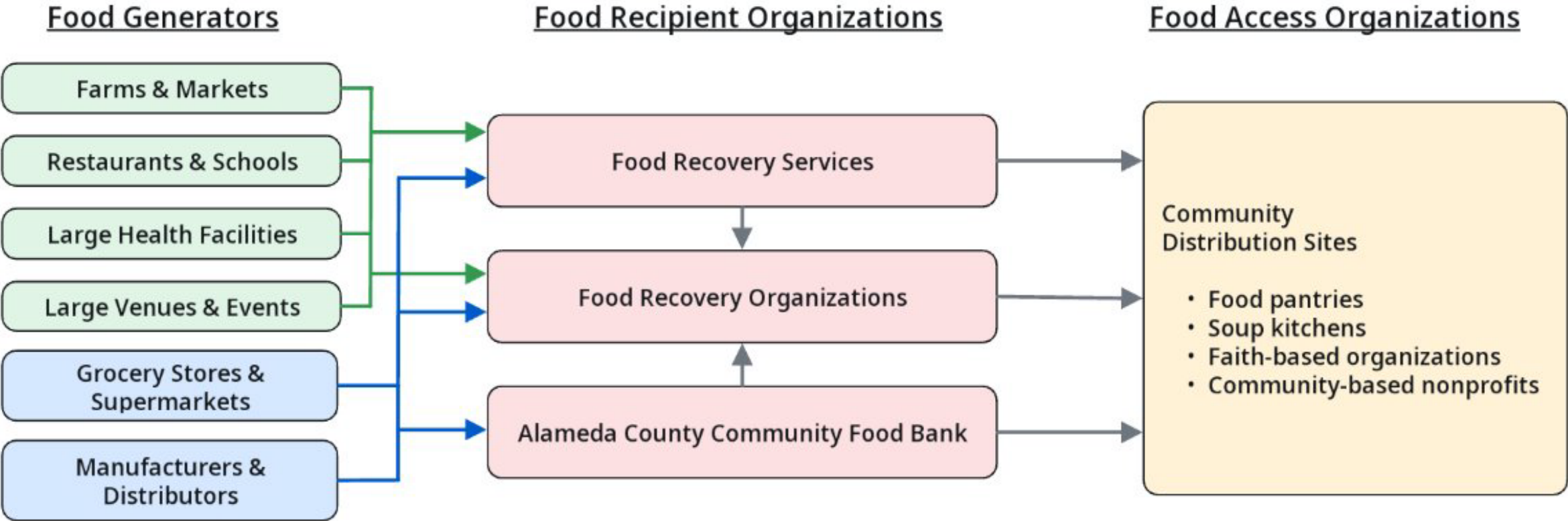
Cassie Bartholomew, Senior Program Manager
Hugo Grégoire, Management Analyst I

March 12, 2026



Alameda County's Food Recovery System

Flow of Surplus Edible Food in Alameda County



Alameda County Food Recovery Network

Launched in April 2021 to strengthen food recovery efforts countywide.

- **Strengthens collaboration** by convening partners to align on food recovery efforts
- **Facilitates peer learning** through best practice sharing
- **Provides SB 1383 education** on tracking and reporting requirements



This photo was taken at the 4-year anniversary gathering of the Network, hosted at Local Ecology and Agriculture Fremont (LEAF).

Building a Shared View of Alameda County's Food Recovery System

Mapping Goals

- Understand existing food recovery landscape
- Identify gaps and overlap in services
- Increase efficiency
- Support SB 1383 edible food recovery goals
- Engage stakeholders to co-create mapping tool
 - Alameda County Food Recovery Network
 - Urban Farm Partners



Phased Approach

Co-Creating Map with Stakeholders

Phase 1	Phase 2	Phase 3
Research & Interviews	Relationship Survey	Developed Three Maps
Centralized SB 1383 Data	Master Dataset Created	Stakeholder Feedback
Baseline Established	Data Expanded	Launched Map with ACFRN

Key Insights from Stakeholder Engagement

- Collaboration exists, but coordination is uneven
- Food recovery is rooted in community dignity
- Resource constraints limit growth
- Mapping holds strong potential
- Food recovery operates within a broader system



Alameda County Food Recovery System Overview



[At Home](#)

[At Work](#)

[At School](#)

A public agency reducing waste in Alameda County

[Home](#) / [Alameda County Food Recovery System Map](#)

Alameda County Food Recovery System Map

This map provides Alameda County Food Recovery Network (ACFRN) participants with a comprehensive overview of SB 1383 commercial edible food generators, food recipient organizations, and food system organizations across Alameda County. It is designed to help participants identify potential donors and partners, explore geographic areas of interest, and strengthen coordination and efficiency across the network.

Using the map filters, participants can view organizations by name, location, or entity type to better understand where donors are located and where food recovery and food access activities are taking place throughout the county.

[This video](#) provides a quick overview and introduction to using the map. Users are advised to use a tablet, laptop, or desktop for the best viewing experience. The map is not designed to work on mobile devices.

You can access the user guide to the Alameda County Food Recovery System map [here](#).

The map is password-protected. ACFRN participants can access login information and updates through the [ACFRN Group.io platform](#).

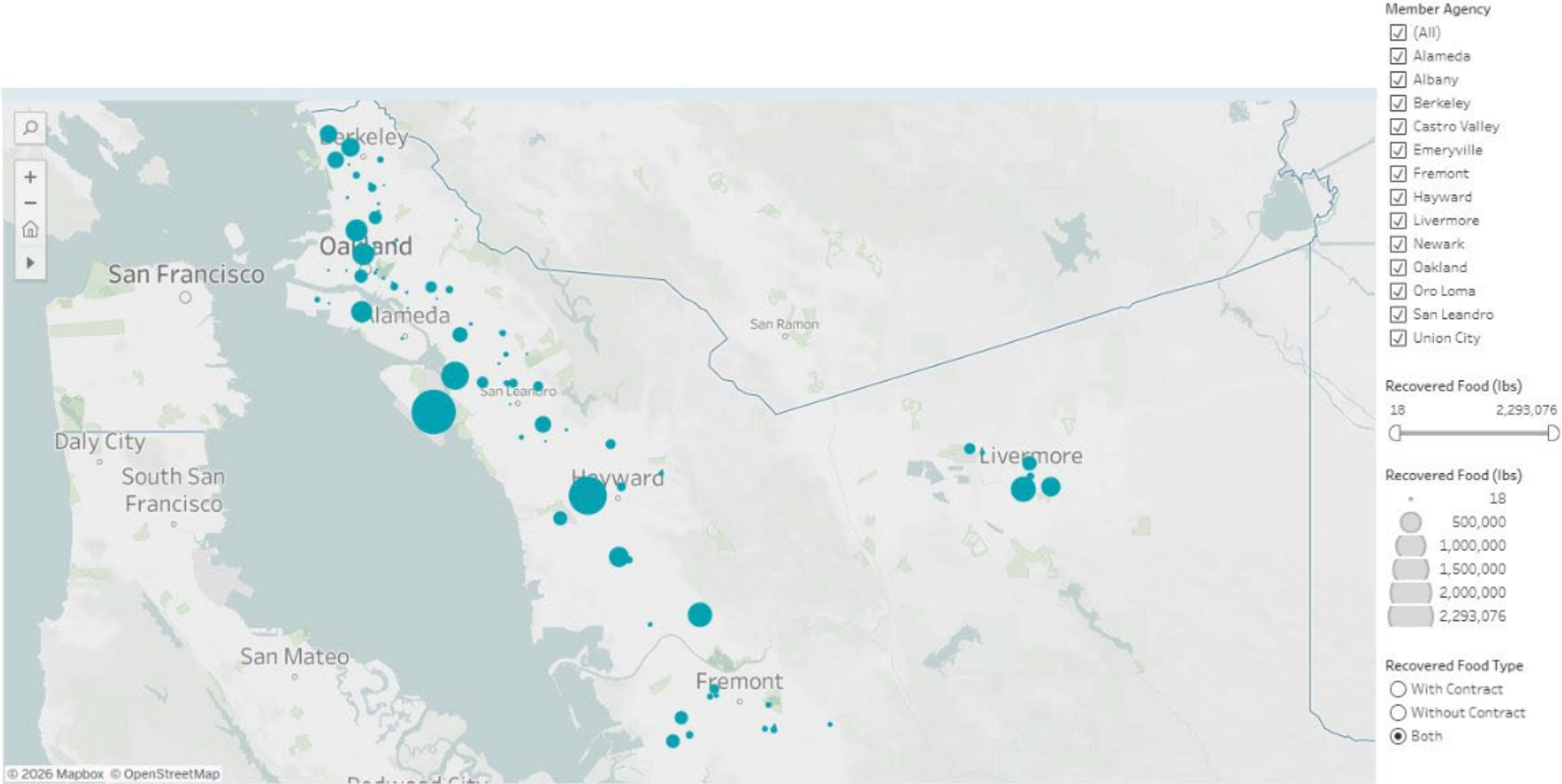
Do you have questions or feedback about the map? There are a couple of ways to get in touch with StopWaste:

1. If you have general feedback about the map, you can share it through this [Feedback Survey](#).
2. If you notice that there is missing or inaccurate information about your organization, you can share updated information with StopWaste through email. Please note, updates will take time to be visible, as the map does not update automatically.
3. If you have any questions, update requests, or want to talk further with StopWaste about the map, reach out via email to Hugo Grégoire at hgregoire@stopwaste.org.

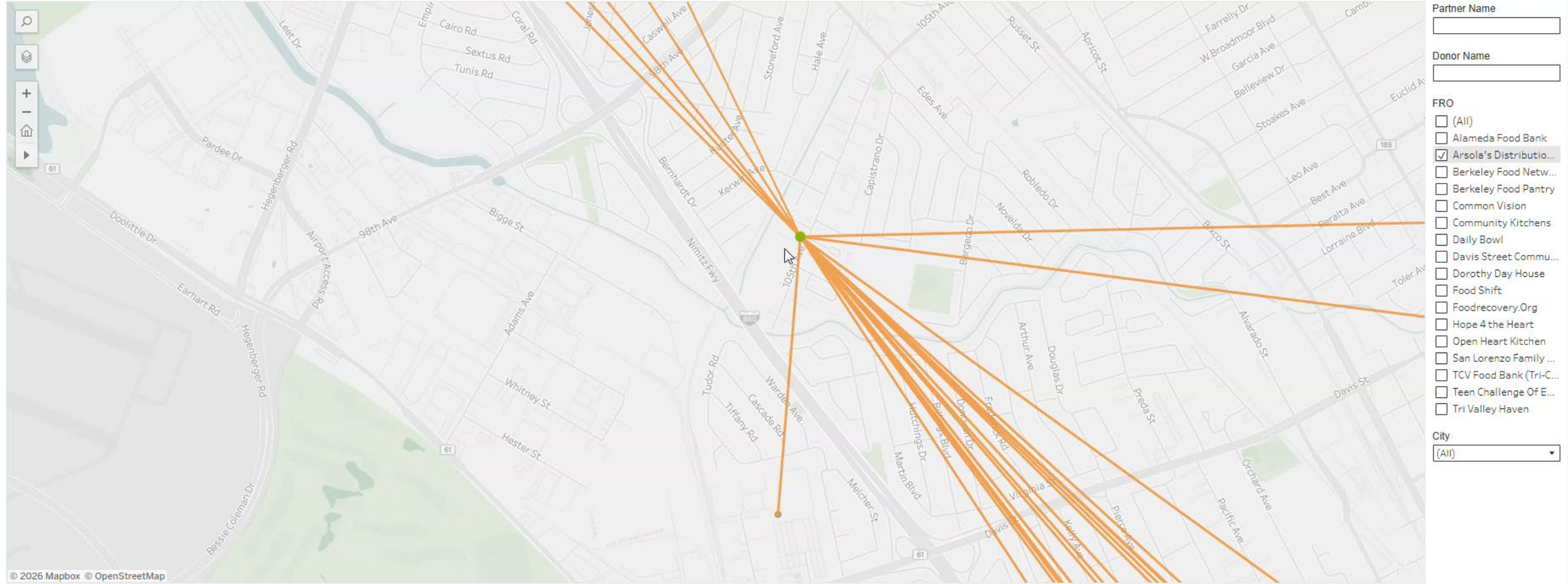
[View Map](#)

(password protected)

2024 Edible Food Recovery Capacity

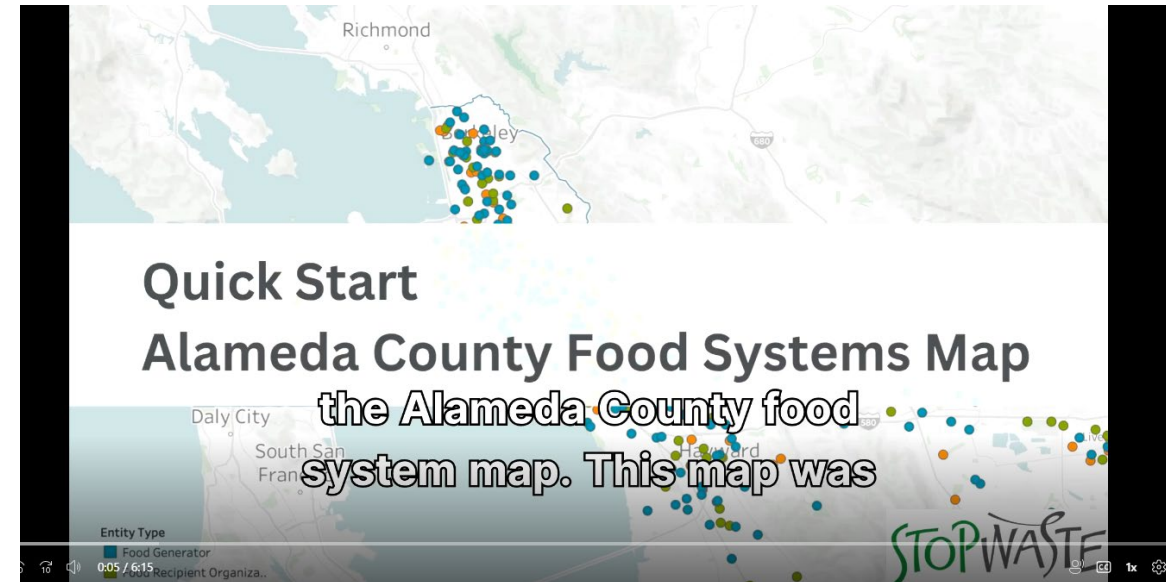


Food Recovery Relationship & Flow Network View



Supporting Map Adoption

- Developed a short video tutorial to orient users
- Created a user guide with definitions and navigation tips
- Presented to ACFRN and jurisdiction partners
- Established a feedback channel for ongoing updates



Future Considerations

- Refine map features based on user testing
- Streamline our data collection systems
- Develop user agreements
- Explore infrastructure sharing mechanisms

