

StopWaste Environmental Educator Training

Each year, the Agency leads an innovative StopWaste Environmental Educator Training, known as SWEET, for Alameda County residents, community leaders, and city staff to learn how to become educators in their communities on sustainable practices.

Community education and outreach is a critical component of StopWaste’s efforts to engage local residents on taking action to reduce waste. The training program includes deep program content and best practices for adult education, and has the flexibility to address various topics, such as using sheet mulch to sustainably convert lawns to gardens, to its current focus on reducing wasted food.

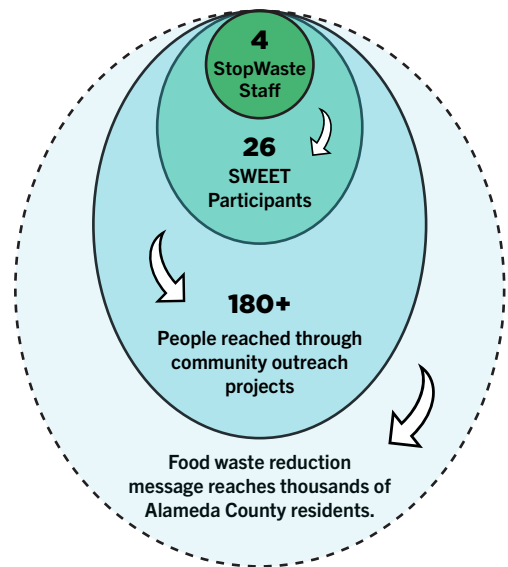
After completing the seven-week program, participants become certified StopWaste Environmental Educators, helping to make a difference in their communities. As part of the program, participants must conduct a community outreach project where they teach at least 10 people ways to reduce wasted food or share what they learned in the training. These have included hosting lunch-and-learns for coworkers and brunch with family and friends, sharing tips on storing food and using leftovers, for example.

Participants come from throughout Alameda County and range in age from high school students to retirees. The program builds a community of people who are passionate about environmental issues and wanting to make change, connected to each other and StopWaste.

StopWaste will be offering its fourth annual SWEET training in the fall of 2019.



SWEET participant Lila Taheraly shares food waste reduction tips at the Eat Real festival in Oakland.



The “train the trainer” model of community outreach greatly amplifies the number of people that can be reached with a particular message.

For more information, visit www.StopWaste.org/SWEET.